

# PROPOSED SIGN PACKAGE - OPTION B

**CVS/pharmacy**

Store #10681  
61 Main Street  
Hopkinton, MA

Project: 10855  
CVS/pharmacy  
Exterior Signage Package

Sales: Gary McCoy  
Date: 04.03.15  
Designer: LR

Note:  
This is an original unpublished drawing created by Poyant Signs, Inc. It is submitted for your personal use in connection with a project being planned for you by Poyant Signs, Inc. It is not to be shown to anyone outside your organization, nor is it to be reproduced, copied or exhibited in any fashion until transferred.

Revisions:  
04.28.15 NLM Rev Signage & Added Pylon Tenant  
05.07.15 DBL Remove Monument from package  
5.29.15 LR Rev pylon scope  
7.20.15 LR Rev pylon scope  
7.22.15 LR Rev changed to non-illuminated approved by CVS, moved lg south side sign, Coellas sign by others  
7.24.15 LR Rev existing lighting called out, moved lg set on south elev  
8.6.15 LR Rev new site plan, added photo comps

Comments:

Large set of letters on south side moved due to existing smokestack. Pylon reface per lease agreement.

Approved by:

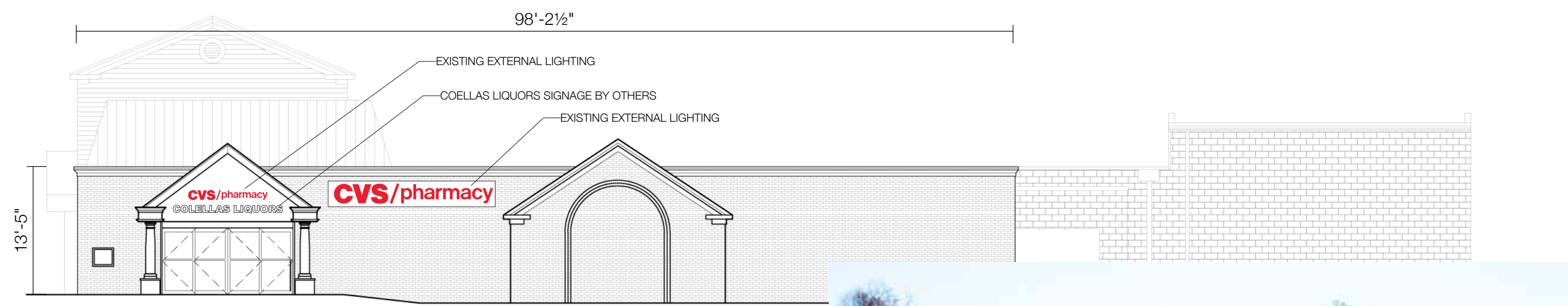
Date:

Building Signage

Sign Elevation

10855-R7

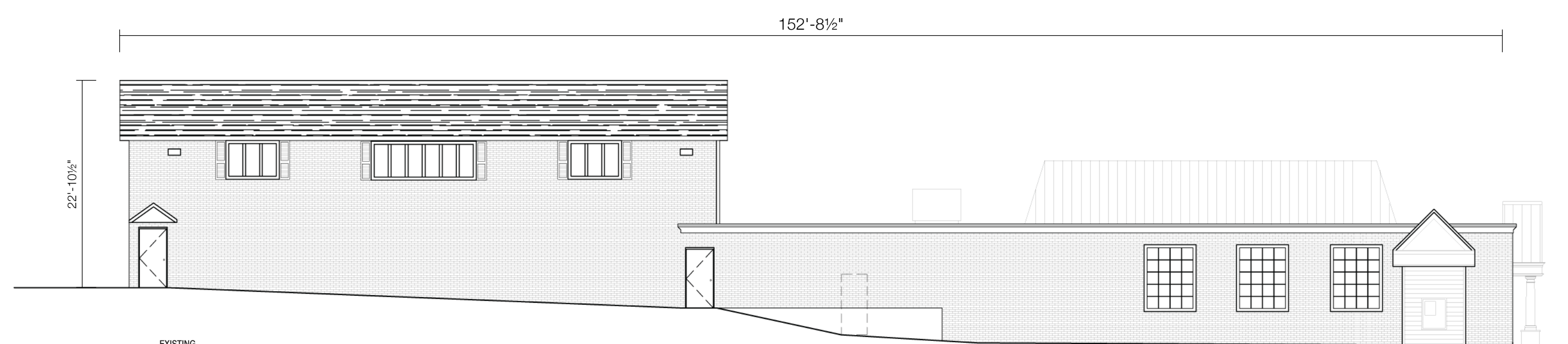
1.1



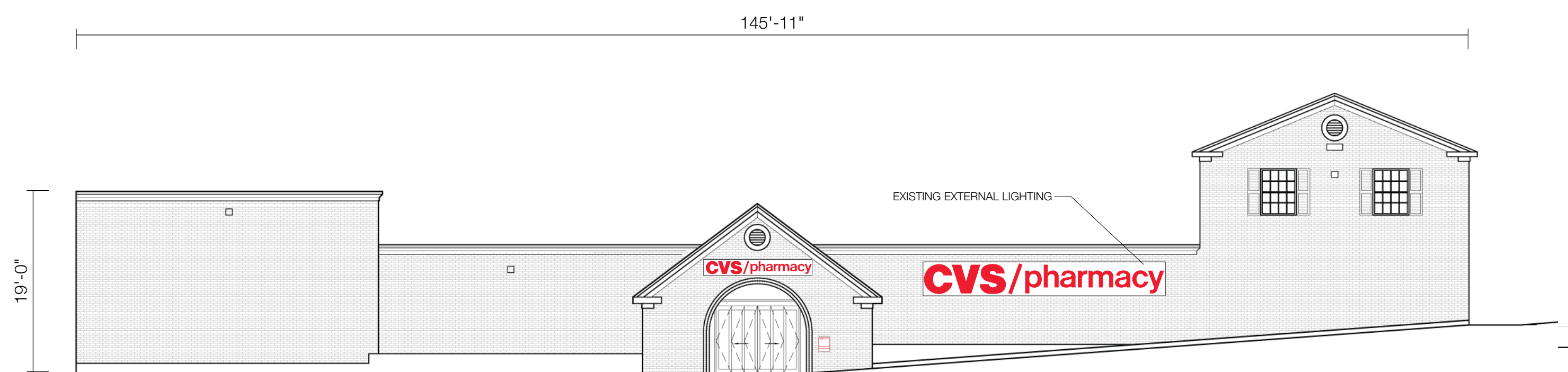
**A** EXISTING NORTH ELEVATION - MAIN STREET  
SCALE: 3/32" = 1'-0"



EXISTING NORTH ELEVATION  
NOT TO SCALE



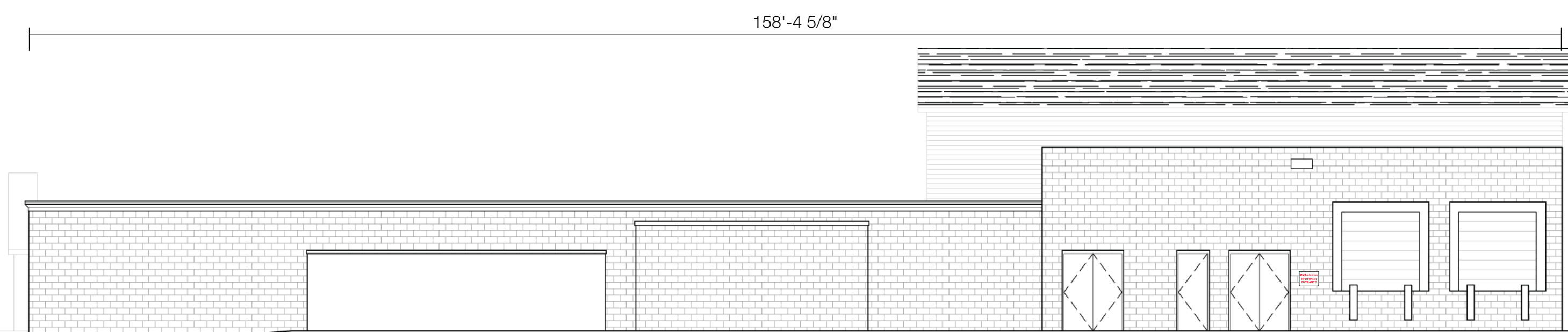
**B** EXISTING EAST ELEVATION - GROVE STREET  
SCALE: 3/32" = 1'-0"



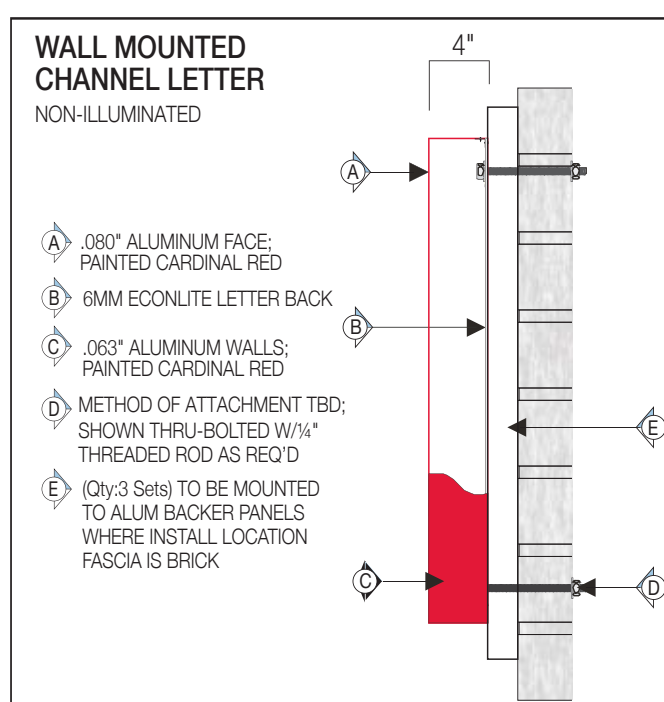
**C** EXISTING SOUTH ELEVATION - PARKING LOT  
SCALE: 3/32" = 1'-0"



EXISTING SOUTH ELEVATION  
NOT TO SCALE



**D** EXISTING WEST ELEVATION - RECEIVING  
SCALE: 3/32" = 1'-0"

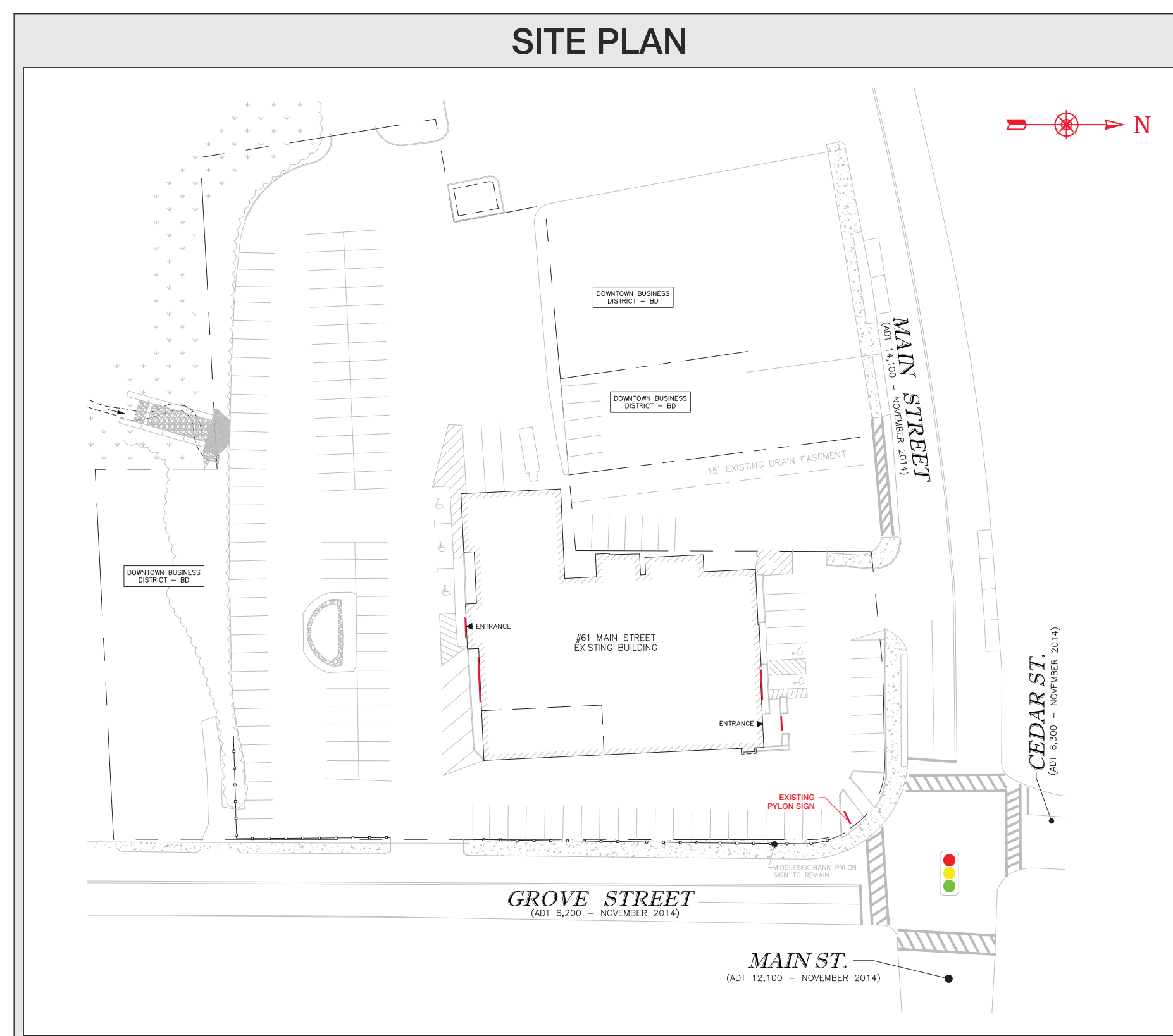


**NOTES**

\* BLOCKING INFO: ALL BLOCKING TO BE DONE BY OTHERS.

SQUARE FOOTAGE CHART OF ELEVATION SIGNS			
	SIGN TYPE & SIZE	HEIGHT(S)	PROPOSED SQ. FOOTAGE
<b>A: NORTH ELEVATION - MAIN STREET</b>			
<b>CVS/pharmacy</b>	NON-ILLUM C/L 2'-0" H. x 16'-9" W.	24" H. 14" H.	33.41 SQ. FT.
<b>CVS/pharmacy</b>	NON-ILLUM C/L ON BACKER 1'-0" H. x 8'-4" W.	12" H. 7" H.	8.75 SQ. FT.
TOTAL			42.16 SQ. FT.
<b>C: SOUTH ELEVATION - PARKING LOT</b>			
<b>CVS/pharmacy</b>	NON-ILLUM C/L ON BACKER 3'-0" H. x 25'-1" W.	36" H. 21" H.	75.18 SQ. FT.
<b>CVS/pharmacy</b>	NON-ILLUM C/L ON BACKER 1'-4" H. x 11'-2" W.	16" H. 9-3/8" H.	14.85 SQ. FT.
TOTAL			90.03 SQ. FT.
TOTAL SIGNAGE			141.70 SQ. FT.

SQUARE FOOTAGE CHART OF DIRECTIONAL SIGNS		
	SIZES	PROPOSED SQ. FOOTAGE
<b>PYLON</b>		
<b>FACES FOR EXISTING PYLON</b>	4'-8" H. x 8'-0" W.	37.33 SQ. FT.
TOTAL		37.33 SQ. FT.
TOTAL SIGNAGE		37.33 SQ. FT.



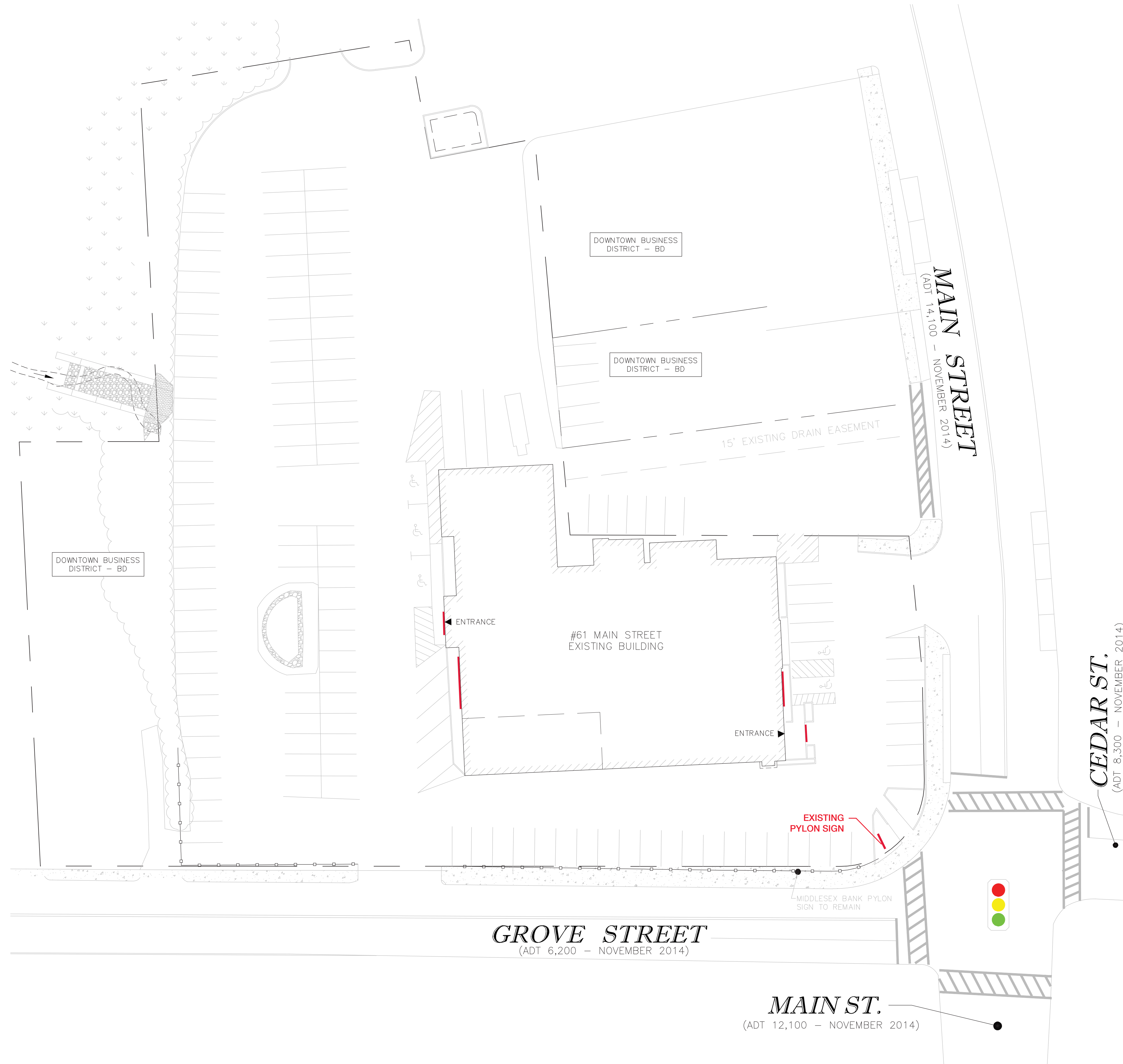
**F** SIGN ELEVATION - FRONT VIEW  
SCALE: 3/4" = 1'-0"

EXISTING SIGN  
\*Existing Pole to be Used for New Sign

PROPOSED SIGN  
\*Existing Pole to be Used for New Sign



SITE PLAN



Note:  
This is an original unpublished drawing created by Poyant Signs, Inc. It is submitted for your personal use in connection with a project being planned for you by Poyant Signs, Inc. It is not to be shown to anyone outside your organization, nor is it to be reproduced, copied or exhibited in any fashion until transferred.

- Revisions:
- 04.28.15 NLM Rev Signage & Added Pylon Tenant
  - 05.07.15 DHL Remove Monument from package
  - 5.29.15 LR Rev pylon scope
  - 7.20.15 LR Rev pylon scope
  - 7.22.15 LR Rev changed to non-illuminated approved by CVS, moved lg south side sign, Coellas sign by others
  - 7.24.15 LR Rev existing lighting called out, moved lg set on south elev
  - 8.6.15 LR Rev new site plan, added photo comps

Comments:

Large set of letters on south side moved due to existing smokestack. Pylon reface per lease agreement.

Approved by:

Date:

Building Signage

Site Plan